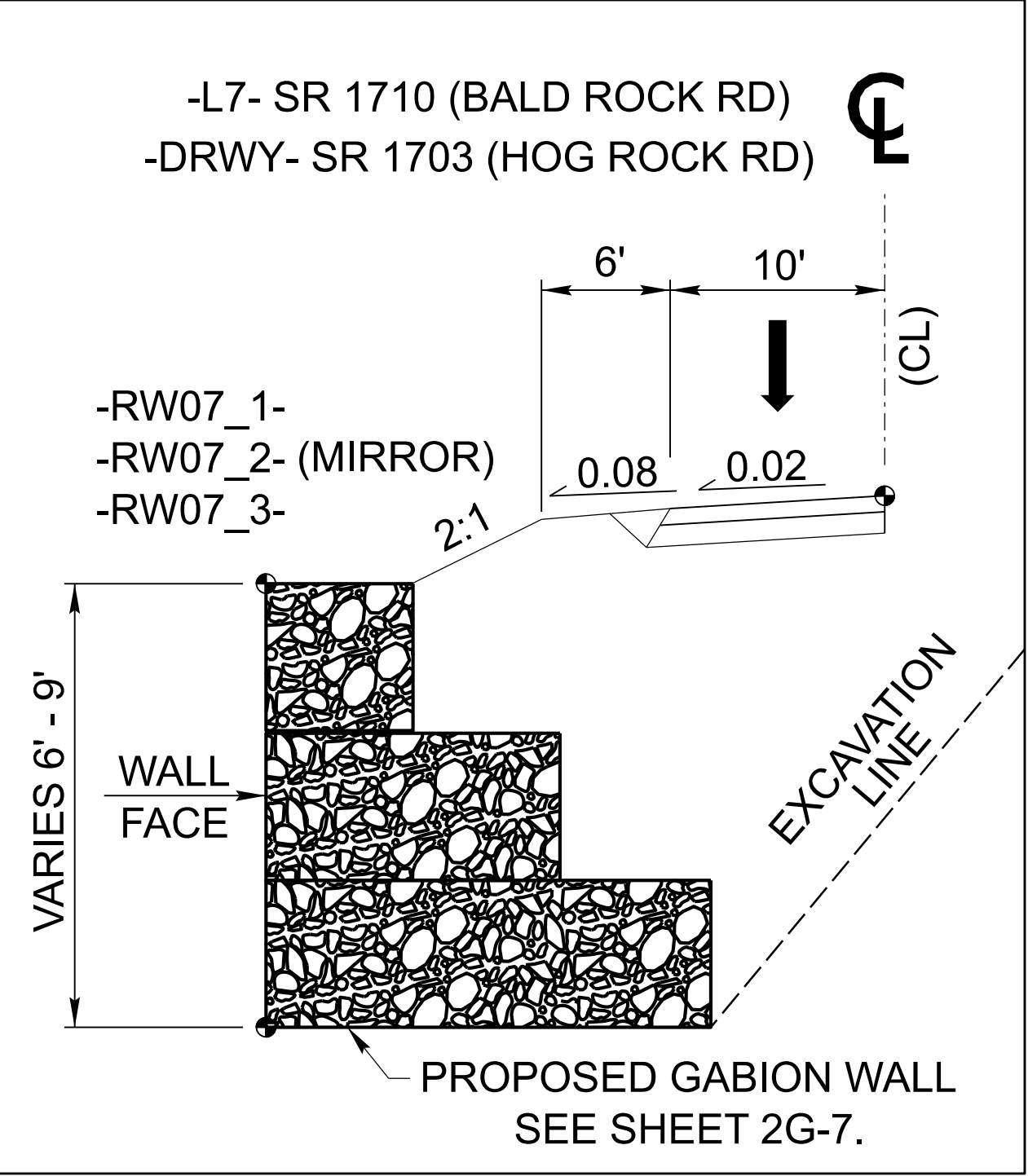
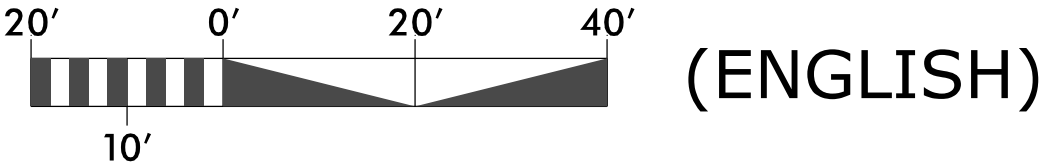
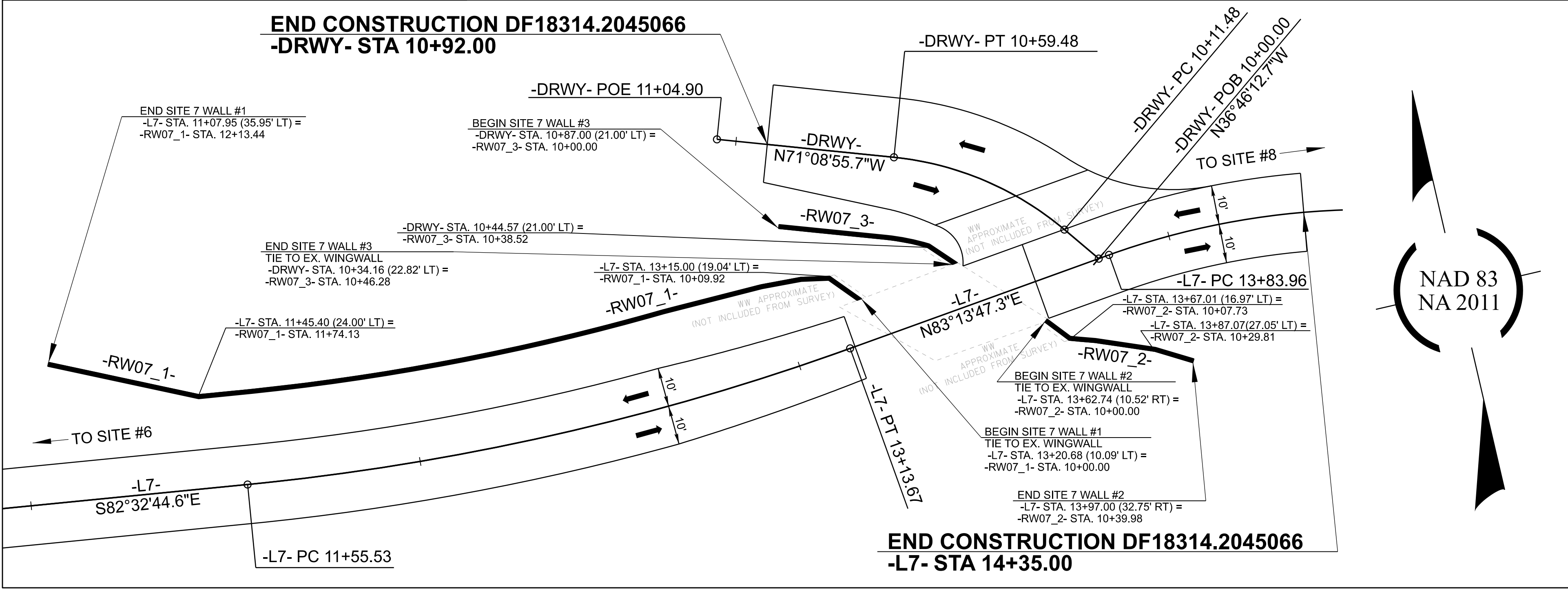


SITE 7 WALL ENVELOPES

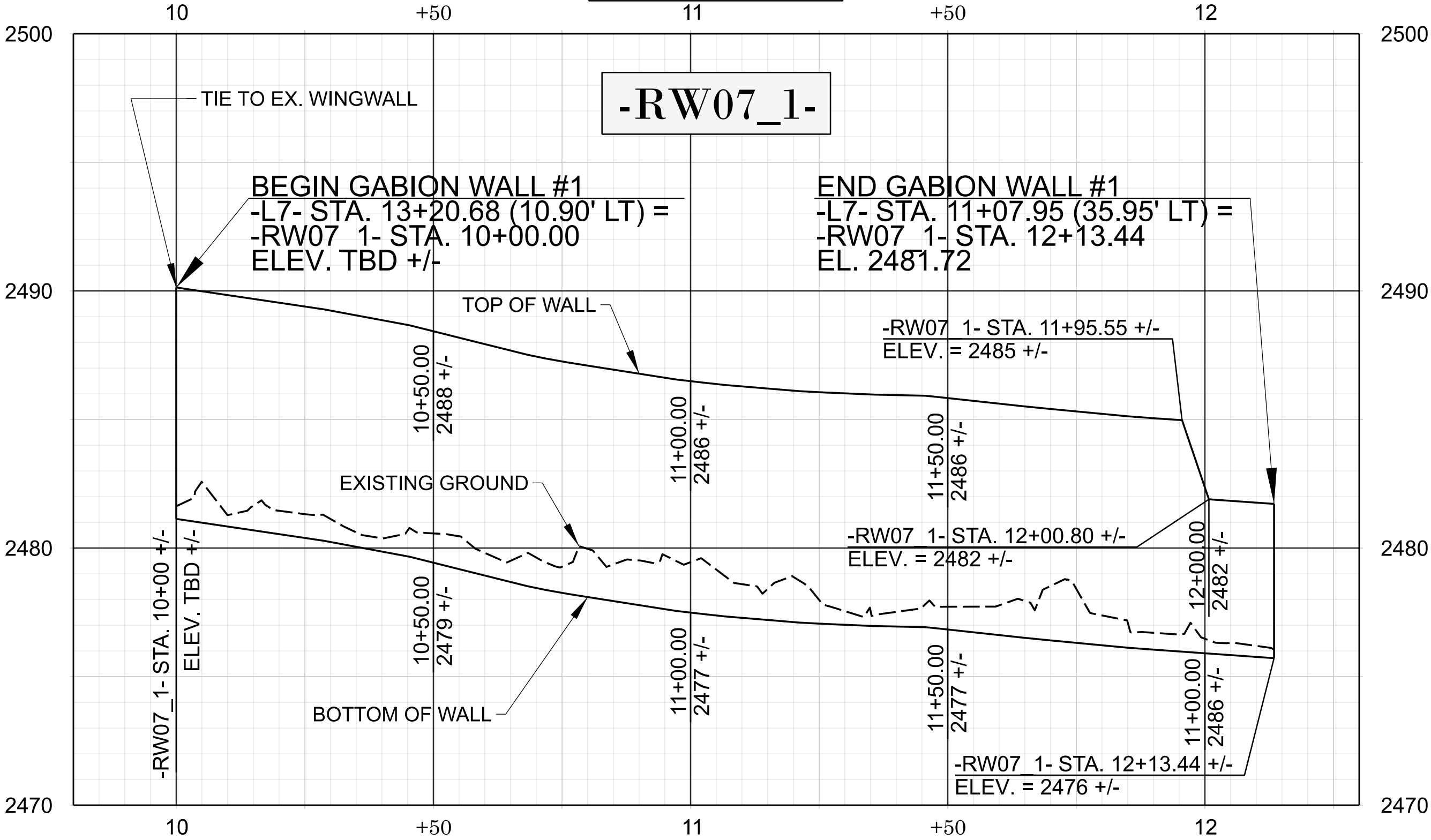
CONTRACTOR RESPONSIBLE TO ADJUST WALL LOCATIONS TO TIE INTO EXISTING BRIDGE WING WALLS

SEE SHEET NO. 2G-7 FOR GEOTECHNICAL DETAILS



SITE 7 WALL #1 - FRONT FACE

APPROX. WALL FACE AREA = 1876 SF

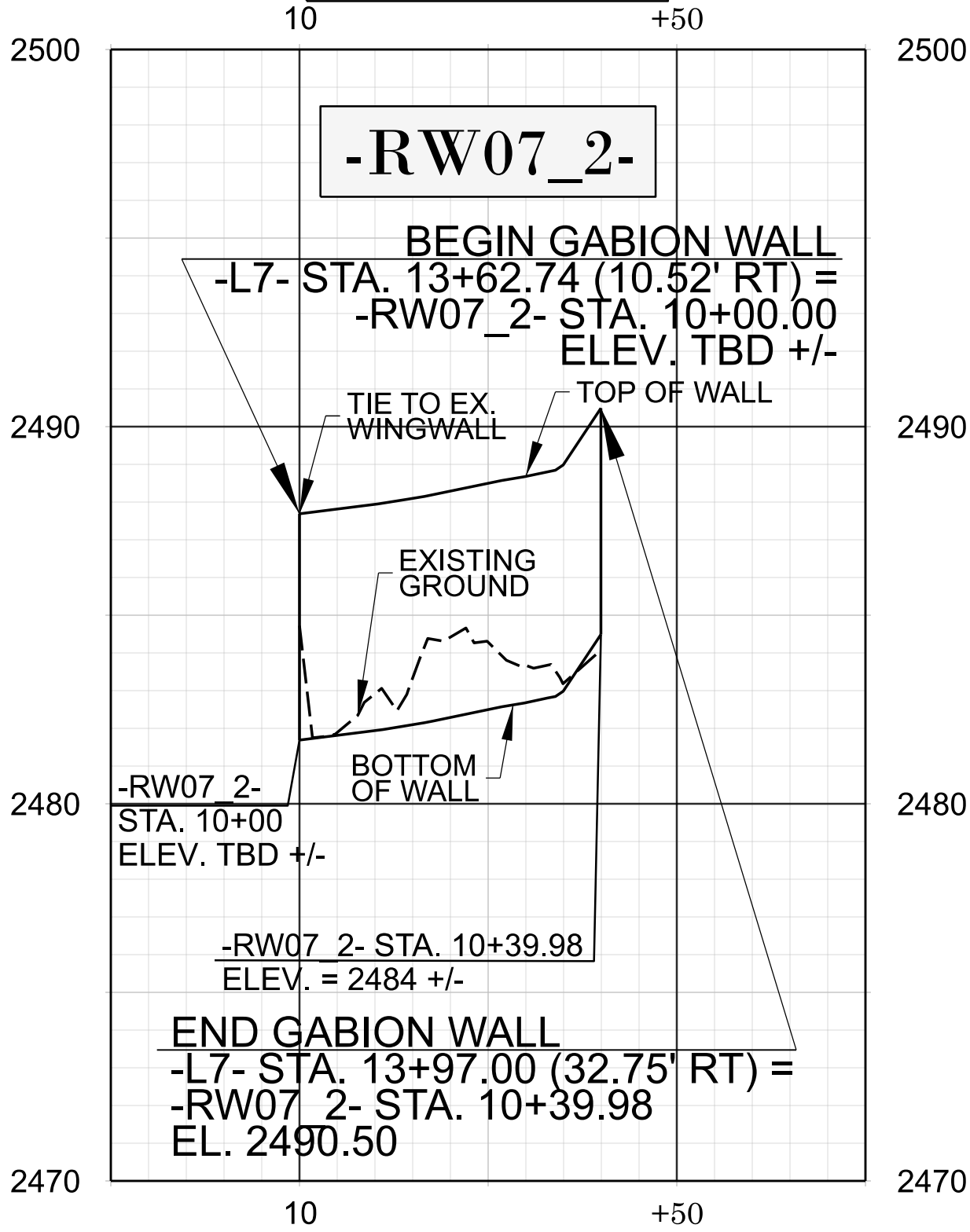


CONTRACTOR TO DETERMINE FINAL BOTTOM WALL ELEVATIONS

THE WALL ENVELOPE DOES NOT ACCURATELY DEPICT THE ACTUAL FACE OF THE WALL

SITE 7 WALL #2 - FRONT FACE

APPROX. WALL FACE AREA = 240 SF

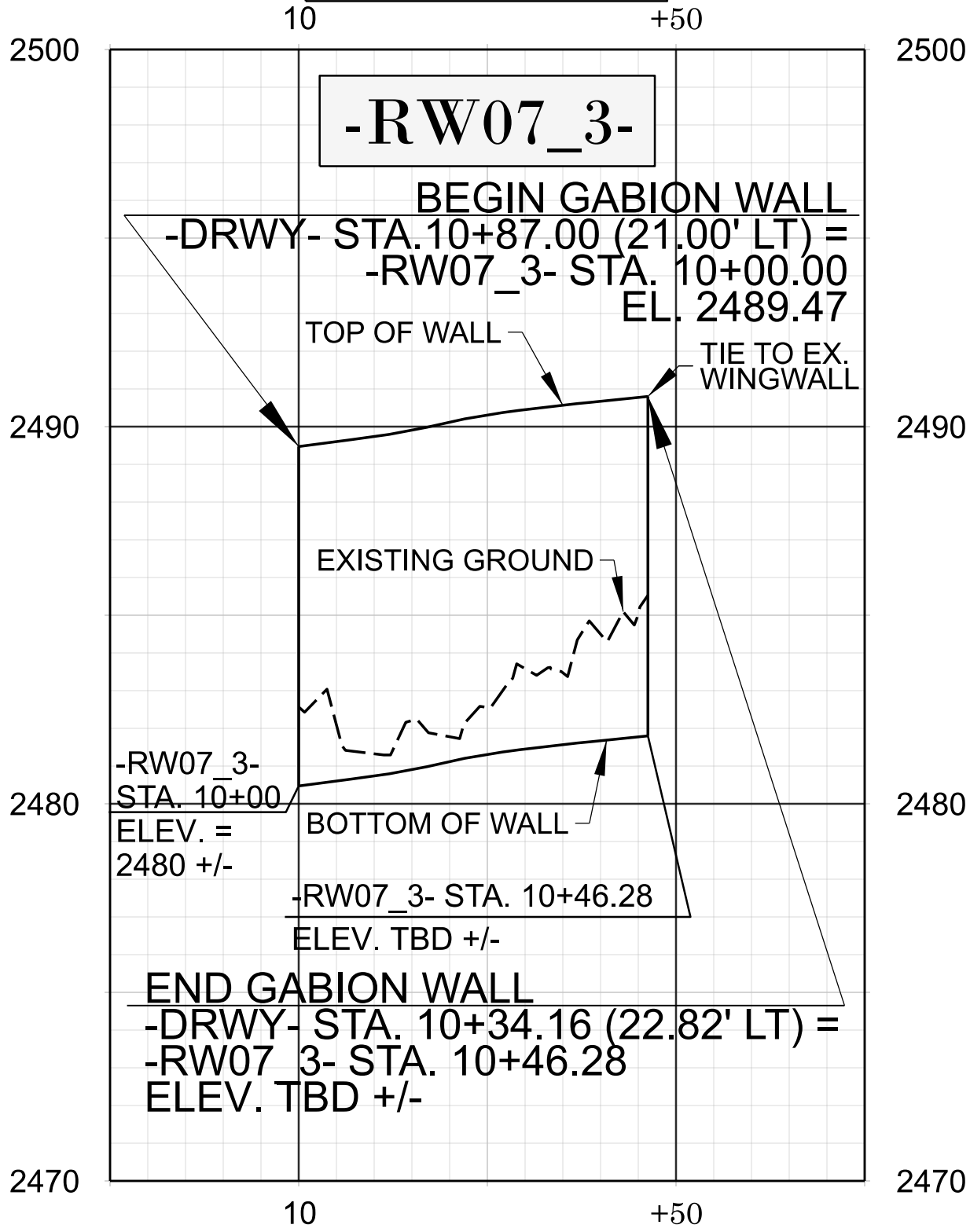


CONTRACTOR TO DETERMINE FINAL BOTTOM WALL ELEVATIONS

THE WALL ENVELOPE DOES NOT ACCURATELY DEPICT THE ACTUAL FACE OF THE WALL

SITE 7 WALL #3 - FRONT FACE

APPROX. WALL FACE AREA = 417 SF



CONTRACTOR TO DETERMINE FINAL BOTTOM WALL ELEVATIONS

THE WALL ENVELOPE DOES NOT ACCURATELY DEPICT THE ACTUAL FACE OF THE WALL

REVISIONS

DF18314.
2045066

FINAL W-4

NORTH CAROLINA
DEPARTMENT OF TRANSPORTATION
HENDERSON COUNTY

HIGHWAY DIVISION 14

ROADWAY DESIGN
ENGINEER

7/31/2025

SEAL
039234
ENGINEER
N. T. HONECUTT

Signed by:
N. T. Honecutt

DOCUMENT NOT CONSIDERED FINAL
UNLESS ALL SIGNATURES COMPLETED

PREPARED BY
KCA
KISINGER CAMPO
& ASSOCIATES

NC FIRM LICENSE No.: C-1506
301 Fayetteville St.,
Suite 1500
Raleigh, NC 27601
(919)882-7839